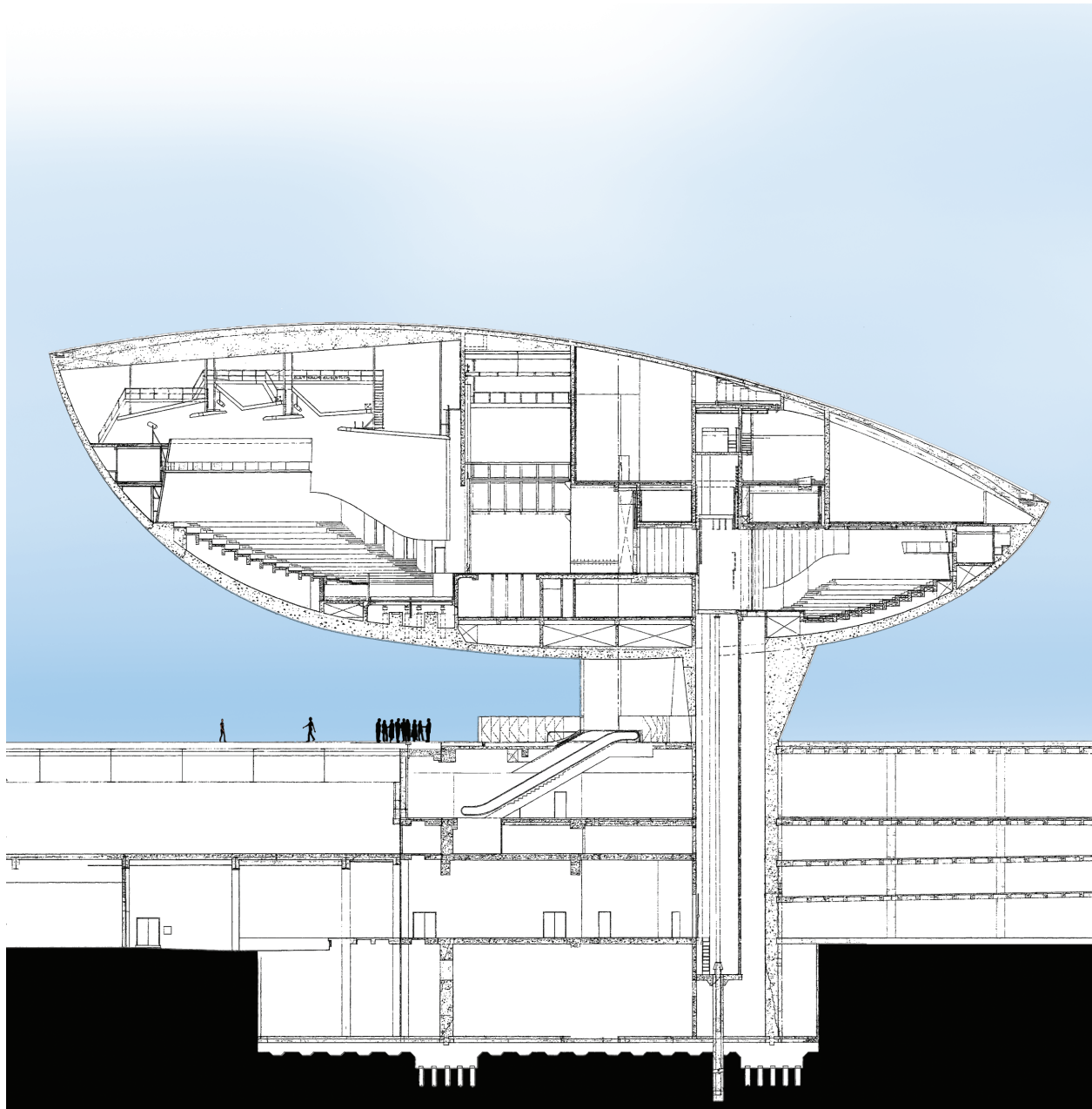


# THE EGG - NYS CENTER FOR PERFORMING ARTS ELEVATORS

Albany, NY



- Unique in their size and shape, this modernization of highly customized hydraulic and traction elevators is located in the New York State Capitol's Performing Arts Center at the Governor Nelson A. Rockefeller Empire State Plaza.
- Second largest in North America, the large cylinder stage lift operates on a one-of-a-kind single tier piston with a 100 ft travel distance.
- Significant attention to many nonstandard details and operational sequencing was also required for an open platform Dresser lift.
- The four midrise traction passenger elevators are highly customized (round) cars.

Client:	Office of General Services (OGS)
Value:	\$3,400,000
Size:	6 Elevators
Completion:	2011 - 13
Contact:	Terry Britton Team Leader Design & Construction (518) 474.0278